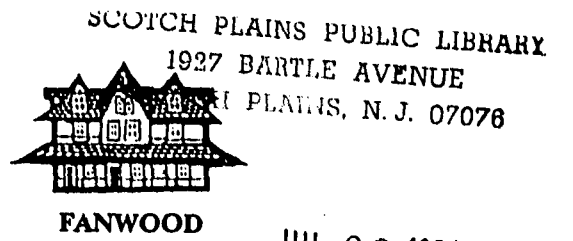




SCOTCH PLAINS

THE TIMES

— Serving Scotch Plains and Fanwood Since 1959 —



FANWOOD

JUL 28 1994

AR

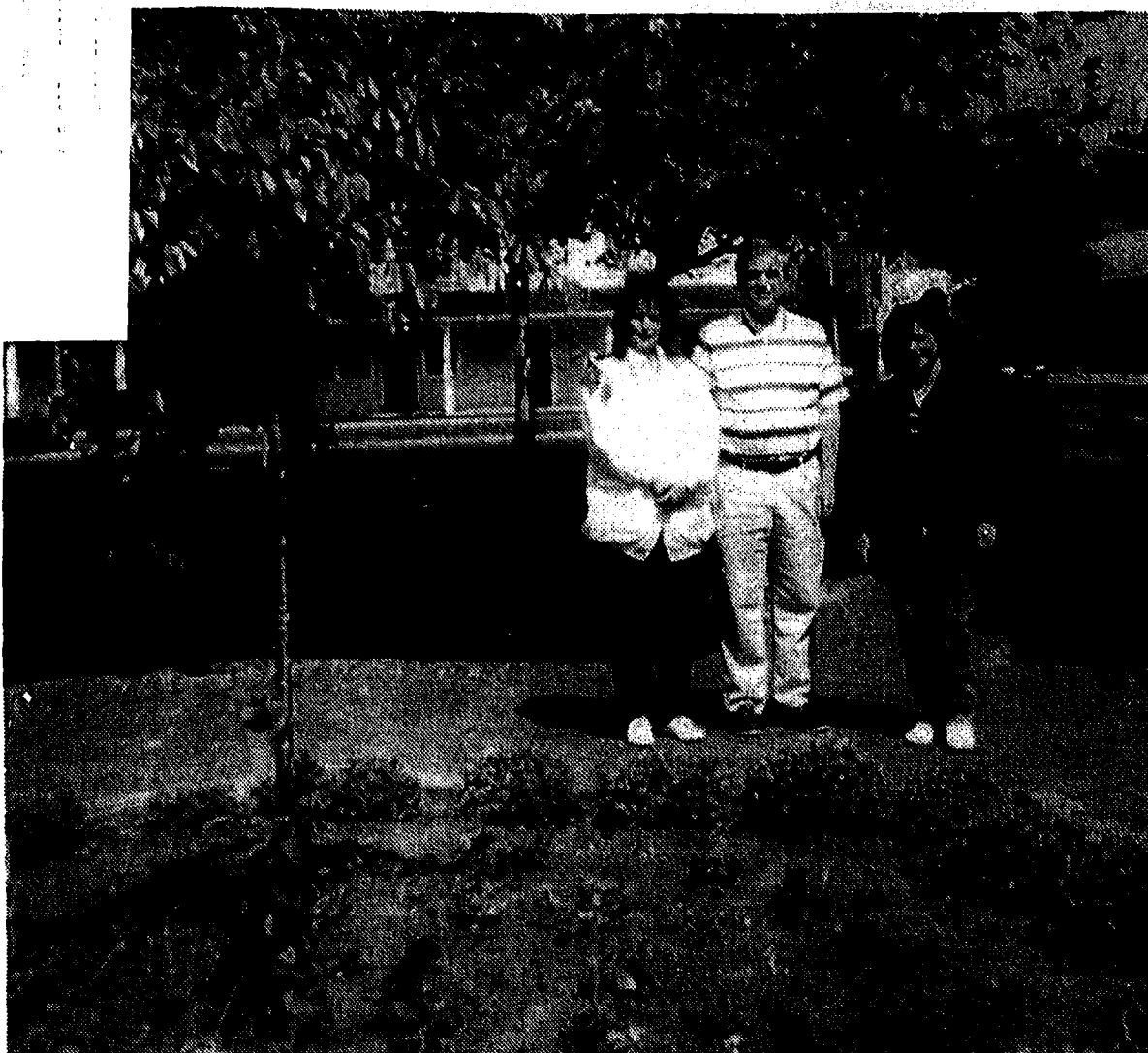
LSPS 485200
Second Class Postage Paid at Scotch Plains, N.J.

Thursday, July 28, 1994

Published
Every Thursday

232-4407

FORTY CENTS



FOR CONTINUING BEAUTY... Scotch Plains Mayor William F. McClintock, Jr., center, looks over the new planting at the Village Green Park in the center of the township with Mrs. Shirley Farkas, left, President of the Scotch Plains-Fanwood Garden Club, and Mrs. Carmen Estevez, the club's outgoing President. Club members have been taking care of the park and its planters since 1980 by donating and planting flowers and by providing weekly maintenance. The Mayor thanked all the members of the club for their demonstration of civic pride. New members are always being sought, and information can be obtained by calling 889-6208.

Funding Plan for Schools Draws Cool Reception by Area Legislators

Accountability, Not Money, Pictured as the Major Issue Before the State Legislature

By PAUL J. PEYTON
Specially Written for The Times

Last week's release of a report for funding public schools in the state developed by an education advisory panel has been met with both criticism and cautiousness on the part of local state legislators. The report comes on the heels of a decision by the New Jersey Supreme Court which ruled the Quality of Education Act of 1990 as unconstitutional because of the contrived disparity in funding between wealthy and poor districts.

The panel has recommended that the state more than double the amount of money it spends on education, estimated at \$4.6 billion, to \$9.2 billion by 1999-2000 school year. The panel, the Education Funding Review Commission, has said the state could pay for this significant increase by abolishing the recently passed income tax cuts implemented by the Governor, Mrs. Christine Todd Whitman, and the legislature, in addition to increasing the state sales tax to seven per cent.

Assemblyman Richard H. Bagger, who represents the 22nd Legislative District which includes Westfield, Scotch Plains and Fanwood, said at least part of the panel's plan closely resembles that of a concept endorsed by New Jersey Association for Public Schools, which is supporting a large increase in taxes to support additional education funding.

Mr. Bagger said he is confident that the legislature will not approve any substantial tax increases due to its impact on its citizens and on the state's economy.

Mr. Bagger said he disagrees with part of the court's ruling which said the 30 poorest districts, which are referred to as special needs districts, should be funded, so they fall at the top of the list of the highest spending districts in the state. He said by following this formula the state would be faced with the continued problem of keeping these districts at the top of the list. He said funding the special needs districts so they are in line with the average spending districts would be a better concept.

The Assemblyman said this idea, along with that of imposing severe caps on suburban school districts to make their spending slow down, so poorer districts can catch up, were both included in the Quality Education Act. He said significant spending in education is not necessarily the best solution.

Assemblyman Bagger said he would support taking money out of the transitional aid accounts for districts and instead funding more fully the categorical aid area which includes transportation and social education which are both mandated by the state. He noted the court has ruled that funding transitional aid to suburban districts is unconstitutional. Yet, the court has continued to support the funding for categorical aid programs.

In terms of overall ruling by the court, Mr. Bagger stated the legislature needs to look at how it defines an efficient and quality education.



Representative Robert D. Franks

Representative Robert Franks Has \$115,786 War Chest

While He Is Expected to Have an Easy Reelection Bid, Two Real Congressional Horse Races Are Shaping Up

By KURT C. BAUER
Specially Written for The Times

Representative Robert D. Franks, a Republican representing the Seventh Congressional District, which includes parts of Union, Essex, Middlesex and Somerset Counties, including Westfield, Scotch Plains and Fanwood, has raised \$37,515 recently, bringing his fall campaign war chest to \$115,786.

Mr. Franks was first elected to the House of Representatives in 1992, defeating his main opponent, Leonard R. Sendelsky, a Democrat, 132,174 to 105,761, in a district that is largely suburban in nature.

In the fall General Election, the incumbent Republican will face Mrs. Karen Carroll, a Democrat from Bridgewater. The seat is considered by most political observers to be a safe one for the Republicans.

There are two districts in the state, however, where there are real races expected in the autumn, the Second and Eighth.

The Second District, having been held by Democrat William J. Hughes of Ocean City for 10 terms, used to be a Republican seat, and there has been much jockeying on the Republican side.

After an expensive Primary Election against State Senator William L.

Gormley of Margate, the winner, Frank A. LoBiondo, has raised \$92,343 in the latest six-week reporting period ended June 30.

This leaves Mr. LoBiondo \$39,338 on hand, since he is still paying for the very expensive and vigorous Primary race which cost him about

CONTINUED ON PAGE 10

WESTFIELD, SCOTCH PLAINS MAYORS AGAINST SUIT

State Law Mandating Dumping Of Waste on In-County Basis Opposed in Federal Lawsuit

Lawsuit Seen by Mayors as Undermining Union County's Broad Efforts To Handle Waste and Adequately Finance Rahway-Based Incinerator

By PAUL J. PEYTON
Specially Written for The Westfield Leader and The Times

A lawsuit filed last week by an organization representing trash haulers and joined by two municipalities seeking to overturn the state's waste disposal system does not have the support of the mayors of Westfield and Scotch Plains.

The lawsuit, filed in federal court in Newark, alleges that the state's system is unconstitutional because it restricts where a community can dump its solid waste. The New Jersey Solid Waste Management Act requires the state's 567 municipalities to transport their waste to disposal and processing facilities that are located within their county.

Based on this law, Westfield, Scotch Plains and Fanwood must send their trash to the Union County Resource Recovery Plant in Rahway.

Westfield Mayor Garland C. "Bud" Boothe, Jr. said he cannot support the lawsuit because, in his opinion, it would only produce a short-term savings to solid waste disposal when the issue in fact is a long-range problem. He said the Union County Board of Chosen Freeholders and the Union County Utilities Authority have developed a long-term solution to the problem with the opening of the incinerator.

He added the lawsuit has little impact on Westfield's taxpayers and would have a greater impact on cities like Jersey City where refuse is collected by the city itself. Jersey City Mayor Bret Schundler, a Westfield native, is one of the supporters of the lawsuit.

Mr. Schundler, at a press conference in Jersey City July 11, called the state regulations on trash disposal and its impact a "disaster" and charged

that the state's Department of Environmental Protection and Energy has created a network of county-based "monopolies" that have forced towns to pay "artificially high disposal fees."

Mayor Boothe also said he was supportive of the efforts of United States Senator Frank R. Lautenberg and Representative Robert D. Franks to seek passage of legislation that would restrict the interstate transportation of solid waste.

The legislation is in response to a ruling by the United States Supreme Court that similar restrictions in New York state are unconstitutional.

In its decision, the court ruled that restrictions on Clarkstown, New York to transport its garbage to a designated facility was unlawful because it interfered with interstate commerce.

Scotch Plains Mayor William F. McClintock, Jr. said he was also opposed to the lawsuit. He said the county has put a considerable amount of money, time and effort into getting the Rahway facility on-line. He said the facility needs to be utilized by the county to its fullest extent to ensure that it is a financially strong facility. He said any effort to allow haulers to dump where they choose, in the end, would only cause a rise in property taxes.

"We should make sure it gets fully used and that people don't walk away from it," said Mayor McClintock.

He said the facility "belongs to Union County, and "we ought to get the biggest advantage from it."

The utilities authority, in a press release, said that the Carbone versus Clarkstown decision, should not be taken as a broad interpretation of the disposal of solid waste. The authority said such an interpretation "could undermine the state's 15-year-old

solid waste management system and jeopardize the authority's ability to repay \$283 million in bonds issued for the construction of the County Resource Facility."

The New Jersey lawsuit was brought by C&A Carbone, Mayor Schundler, Mayor John Rooney of Northvale, who is also an Assemblyman; the Scotch Plains-based Waste Management Association of New Jersey and the National Solid Waste Management Association.

Carbone was the plaintiff in the Clarkstown case.

In a letter to Senator Lautenberg opposing the legislation before Congress, the Waste Management Association indicated that the bill "violates every premise of interstate commerce provisions under the constitution and places an unfair economic burden on state taxpayers and municipalities."

The association said the average cost to dump solid waste in New Jersey is \$94 per ton. They claim New Jersey has among the highest rates in the country. For instance, the cost in the western region of the country, they indicated, is \$16 per ton. The cost in the Pacific region is \$33, \$30 in the Midwest, \$33 in the Southeast and \$67 in the Northeast, they said.

They said Union County has the highest debt of any county in the state for a solid waste facility at \$282,790,000. The only county close to that figure is Mercer County at \$261,000,000, they said.

Edward Cornell, Executive Director at Waste Management, said he is asking towns like Westfield, Scotch Plains and Fanwood to join the suit at no cost to the towns. He said a victory in the lawsuit would generate savings to all taxpayers in the three towns and the state as a whole.

Fanwood Board of Adjustment Okays Addition of Cray Terrace Front Porch

Borough Body Confirms Four Actions Taken at June 23 Meeting

By SUZETTE STALKER
Specially Written for The Times

The Fanwood Zoning Board of Adjustment, during its regular meeting last Thursday, heard one new application and memorialized four resolutions confirming its decisions on recent cases.

John Piccola of 14 Cray Terrace successfully petitioned the board for permission to build a small porch onto the front entrance of his home. He explained he believed the 65-square-foot structure would provide easier ingress and egress for family members and would allow him to keep a more watchful eye on his children while they are playing outdoors.

Mr. Piccola testified the porch would not extend beyond six feet from the house, and shrubbery would be placed as a screening around the base for aesthetic purposes.

He required a variance from the board because the proposed porch will have a front yard setback of 29 feet in violation of the minimum 35 feet required under the borough's zoning ordinance.

Board officials addressed concerns from a neighbor regarding the proposed impact the porch would have on what the neighbor described as the short length of the Piccola front yard. They confirmed that upon reviewing the application they determined the property was suitable for the intended addition.

There was no opposition to the application from the Fanwood Board of Health, Shade Tree Commission,

Fire Department, Police Department or Environmental Commission, according to the board.

The four resolutions memorialized last week involved applications which were heard by the board during its June 23 meeting.

Mrs. Donna Dolce of 5 Carsam Street received permission to install an eight-foot-by-10-foot prefabricated storage shed on the side of her property to keep seasonal furniture and equipment protected from inclement weather.

Robert Smith of 48 Fourth Street got the board's green light to build an addition onto his home, which had required variances for rear yard and side yard setbacks.

Mr. and Mrs. Louis Dodge of 67 Glenwood Road obtained board approval to build a 16-foot deck onto the rear of their house.

Mr. and Mrs. Leo Wang of 245 King Street were granted permission by the board for a 10-foot-by-12-foot storage shed.

HOW TO GET THE TIMES

Just Fill in the Form
On Page 10
And Return It to Us!



BRING ME YOUR TIRED... Seventh graders at Terrill Middle School simulated immigrant experiences last month with the help of Mrs. Hejna Newmark, who led the day's activities. Mrs. Newmark, former principal of the religious school at Temple Emanu-El in Westfield, is a Holocaust survivor and former schoolmate of Anne Frank in Amsterdam. The Terrill gymnasium was transformed into The Great Hall of Ellis Island, and students arrived with their "families" and with hopes of gaining admittance to the United States. They proceeded through a series of stations to present their immigration documents and to be checked for fitness as good Americans.



INTO SPACE... Scotch Plains-Fanwood High School teacher of earth science and physics, Lee Thilow organized a team of freshmen who designed their own solar-powered space vehicles for the 4th Annual Panasonic Creative Design Challenge. Mr. Thilow was captured above with contest participants, left to right, Jamie Bishop, Don Nish, Andrew Regenthal and Joseph Humenik. The Creative Design Challenge was co-sponsored by New Jersey Institute of Technology, Liberty Science Center and the Secaucus-based Panasonic Industrial Company.

Dixieland Band At Village Green

Elite's Dixieland Band will be performing at the Village Green in Scotch Plains on Thursday, July 28, at 8 p.m. "The instrumentation of the group has a hypnotic effect that transports the audience like a time machine to an era of fun, excitement, innocence and color. Spectators will get a feeling of pride in our country as they experience American culture through the Dixieland sound," a spokesman said.

Patrons are urged to bring blankets or chairs to sit on. In case of rain, this free concert will be held in the Scotch Plains Court Room. For further information, please call 322-6700.

DEADLINES HELP PAPERS SERVE YOU

Those preparing press releases for submission to *The Westfield Leader* or *The Times* are reminded all copy should be in the hands of the Editor at 50 Elm Street, Westfield, by 4 p.m. on the Friday before the Thursday on which they wish it to appear.

Leader releases also may be mailed to Post Office Box 250, Westfield, 07091, and Times releases to Post Office Box 368, Scotch Plains, 07076, to meet the above requirements.

For events which happen the weekend prior to publication, press releases should reach the Editor by Monday of the week of publication at 10 a.m.

Obituaries will be taken until Tuesday at 5 p.m.

For events which are planned weeks or months in advance, we encourage submission of stories as early as possible prior to the event.

The above deadlines are meant to enable us to prepare your copy carefully.